

TROMBONISSIMO

Trombone

Étude normalisée niveau inférieur
pour Trombone

Marc Jeanbourquin

Larghetto (♩ = ca.60)

2



mf

11



mf

18

19



f

27

Rit.

31

Andante (♩ = ca.90)

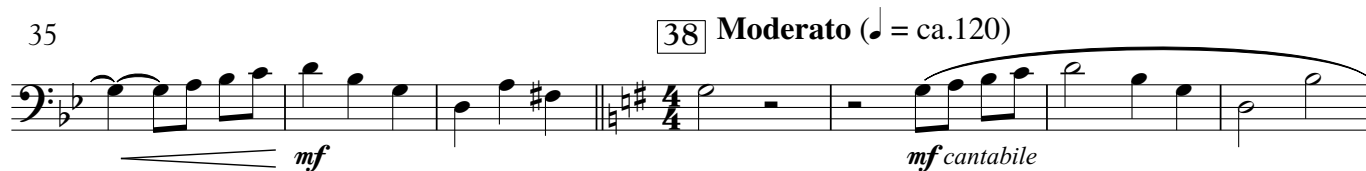


mf *mp appassionato*

35

38

Moderato (♩ = ca.120)



mf *mf cantabile*

42

48



mf

49

4



mf

Trombone

59 **Subito più mosso** (♩ = ca.152) 65

6

mp giocoso

72

mf

80

2

83

f

89

91

95

sfp *à défaut* *f*

TROMBONISSIMO

B♭ Trombone

Étude normalisée niveau inférieur
pour Trombone

Marc Jeanbourquin

Larghetto (♩ = ca.60)



11



18

19



27

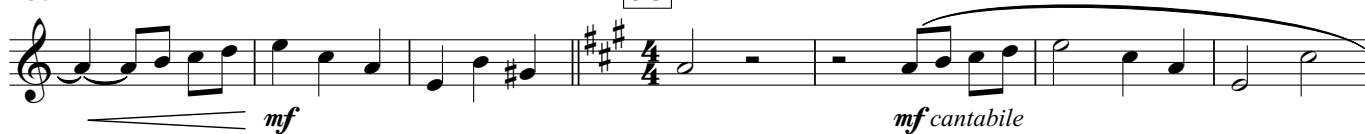
Rit.

31 Andante (♩ = ca.90)



35

38 Moderato (♩ = ca.120)



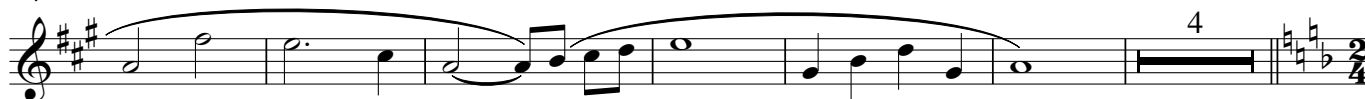
42

48



49

4



59 **Subito più mosso** (♩ = ca.152) [65]

B♭ Trombone

6

mp *giocoso*

Detailed description: This staff contains measures 59 through 64. It begins with a whole rest for six measures, indicated by the number '6' above the staff. The music then starts with a half note G4, followed by quarter notes G4, A4, B4, and C5. The dynamics are marked *mp* and the mood is *giocoso*. There are accents over the notes in measures 62 and 64.

72

mf

2

Detailed description: This staff contains measures 65 through 71. It starts with a half note G4, followed by quarter notes G4, A4, B4, and C5. The dynamics are marked *mf*. There are accents over the notes in measures 65, 66, 68, 69, 70, and 71. The staff ends with a double bar line and a second ending bracket labeled '2' over a whole rest.

82

[83]

f

Detailed description: This staff contains measures 72 through 81. It starts with a half note G4, followed by quarter notes G4, A4, B4, and C5. The dynamics are marked *f*. There are accents over the notes in measures 73, 74, 76, 77, 79, 80, and 81. A key signature change to one sharp (F#) occurs at measure 73, indicated by a double bar line and a sharp sign above the staff.

89

[91]

Detailed description: This staff contains measures 82 through 88. It starts with a half note G4, followed by quarter notes G4, A4, B4, and C5. The dynamics are marked *f*. There are accents over the notes in measures 83, 84, 86, 87, and 88. A key signature change to two sharps (F# and C#) occurs at measure 83, indicated by a double bar line and two sharp signs above the staff.

95

sfp *à défaut* *f*

Detailed description: This staff contains measures 89 through 94. It starts with a half note G4, followed by quarter notes G4, A4, B4, and C5. The dynamics are marked *sfp*. There are accents over the notes in measures 89, 90, 92, 93, and 94. A key signature change to two sharps (F# and C#) occurs at measure 89, indicated by a double bar line and two sharp signs above the staff. The staff ends with a double bar line. There are notes in parentheses in measures 92 and 93, with the text 'à défaut' written below them.